



Project 135659
Lab # 131849
Date Rec'd 1/3/2026
Report Issued 1/20/2026

Project
Sample Ipamorelin 10 mg

Certificate of Analysis



<u>Analyte</u>	<u>Result</u>	<u>LOQ</u>	<u>Units</u>	<u>% of Label</u>	<u>Method</u>	<u>Date</u>	<u>CAS</u>
Peptide Analysis							
Chromatographic purity	>99.95	0.5	%		HPLC-UV/MS	1/15/2026	
Ipamorelin	10.8	0.5	mg	107.8	HPLC-UV-MS	1/15/2026	170851-70-4
Ipamorelin	ID Confirmed				HPLC-UV-MS	1/15/2026	

The data presented are from the analysis of the sample shown and meet Krause Analytical internal quality assurance criteria unless otherwise flagged.
 Methods shown reference current Krause Analytical SOPs
 ND - Not detected LOQ - limit of quantification
 Copyright © 2025 Krause Analytical LLC. All rights reserved.

Respectfully submitted,

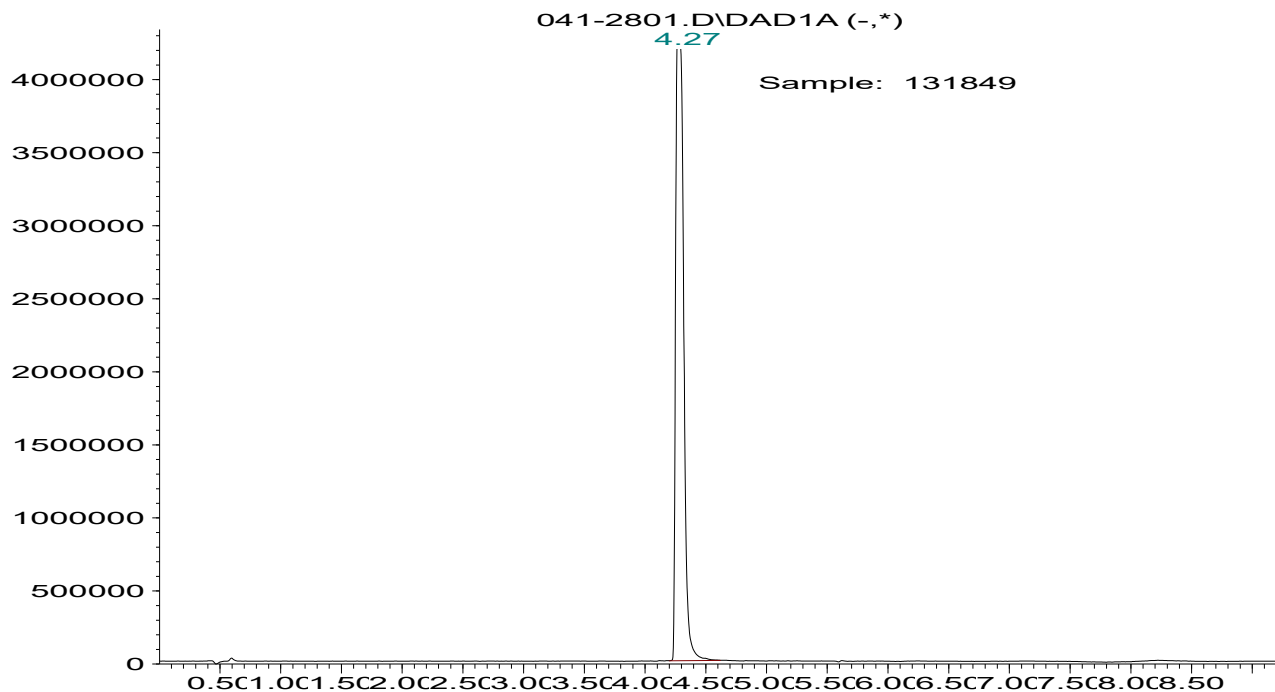
Mark C. Krause
 Laboratory Director



krause analytical

Chromatogram

Response_



Mass spectrum/Reference Spectrum

